



## Geo Connection

### Survey Vessel

#### Classification / Flag / Registration

Vessel Name	: Geo Connection
Owner	: Geo Tender II B.V.
Operator	: Geo Plus Survey B.V.
Flag	: Dutch
Call sign	: PCFZ
IMO	: 9590371
Port of registry	: Eemshaven, The Netherlands
Built	: 2010
Builder	: No Limit Ships BV, The Netherlands
Range	: 30 nautical miles
Classification	: Lloyds Register, 100 A1, LMC up to 30 Nm, SSC PATROL MONO HSC, G3
GMDSS	: A1

#### General dimensions

Length overall (excl. fenders)	: 16.70 m
Length between perpendiculars	: 14.66 m
Breadth moulded	: 4.50 m
Breadth overall	: 5.26 m
Draft	: 1.30 m
Airdraft	: 3.50 m
Gross Tonnage	: 36 tons
Light ship weight	: 32 tons

#### Geo Plus B.V.

Verlengde Bremenweg 4  
9723 JV Groningen  
The Netherlands

VAT: NL815180573B01  
IBAN: NL78RABO0319034852  
CoC: 2091383

+31 (0) 50 207 4820

info@geoplus.nl  
www.geoplus.nl

#### Accommodation

Marine crew	: 2 persons
Passengers	: 6 persons
Bedspace / 2 cabins	: 2 x 1 person

Toilet, shower and complete galley on board.  
Airco and heating in all compartments.

#### Speed

Speed	: max. 18 knots (C-rating) at 100% load
Survey speed	: 4 – 10 knots

#### Capacities

Fuel	: 4.000 liters
Fresh water	: 900 liters
Grey / black water	: 400 liters

#### Machinery / Propulsion

Propulsion	: Diesel
Diesel engines	: Volvo 2 x 478kW (2x 650hp)
Generator + inverter	: 17 kW + 9 kW

#### Survey equipment

Multibeam	: Kongsberg EM2040C MK II (hull mounted), dual transducer, 200/300/400 kHz
Singlebeam	: Kongsberg EA400 (hull mounted), 38/200 kHz
Gyro/Motion reference	: IXSEA Octans 4
Hydr. Positioning	: Trimble SPS855, GPS/GLONASS RTK/DGPS
Sound Velocity Probe	: Reson SVP 14/15
Sound Velocity Sensor	: Valeport Mini SVS
Others	: UPS, Hydrographic computer, 19" rack
Additional	: A-frame, over the side pole

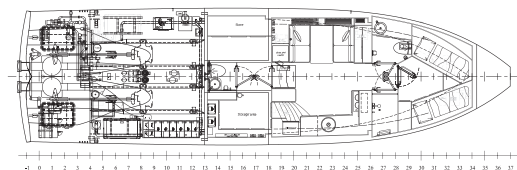
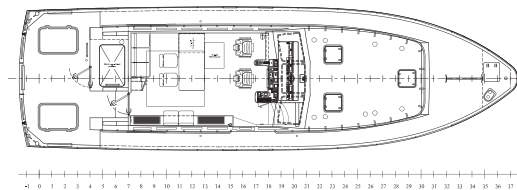
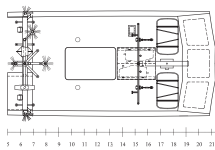
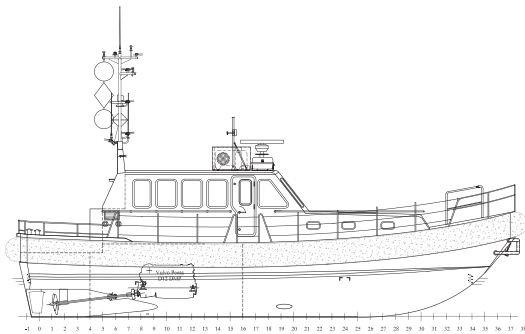
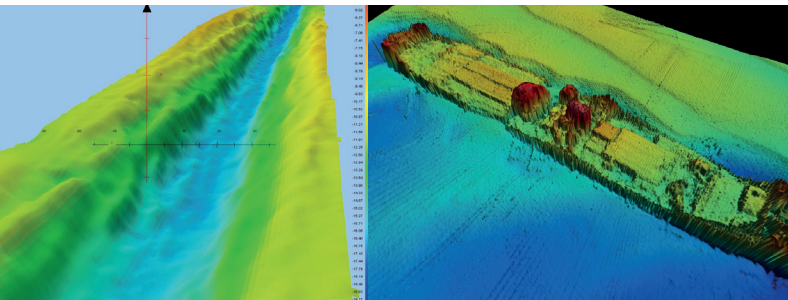


### Navigation equipment

- Radar Kodan MDC 1710P
- GPS Navigator Kodan KGP-920
- GPS Compass Comnav
- Forward Looking Sonar Echopilot platinum
- Furuno Naxtex
- Automatic Identification System (AIS)

### Communication / Connectivity

- 2 x VHF Sailor RT 5022
- VHF radiotelephone Entel HT 649
- MF/HF Radio
- EPIRB MT 403FF
- Boardnet 24V / 230V



### Geo Plus B.V.

Verlengde Bremenweg 4  
9723 JV Groningen  
The Netherlands

VAT: NL815180573B01  
IBAN: NL78RABO0319034852  
CoC: 2091383

+31 (0) 50 207 4820

info@geoplus.nl  
www.geoplus.nl

### Additional operations

Besides having the possibility to go off-shore for fast survey work, the vessel can also be used for client rep / project staff purposes, as guard vessel or for deliveries of parcels, spares and crew.

### Transport

The vessel is equipped with hoisting eyes for fast mobilisation/ transport purposes. Also transport cradles with container locks are available.

### Sustainable Features

Low sulphur fuel + LED illumination.

### Safety

Personal Safety Gear : 8 persons  
Life Rafts : 2 x 8 persons  
Trading area : 30 Nm

### Multifunctional Survey Vessel

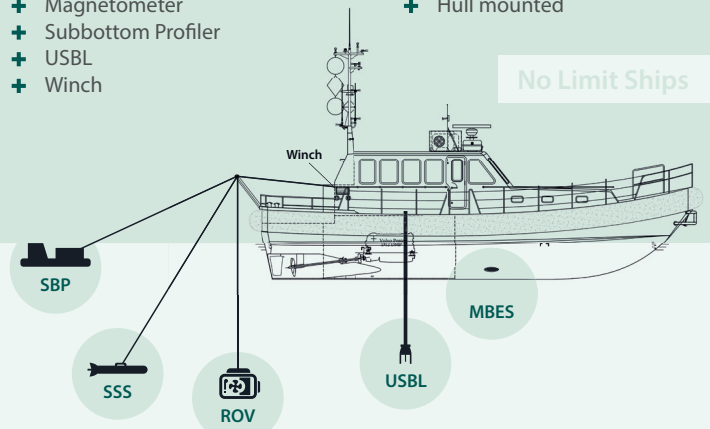
### Easy to install project specific sensors

For instance:

- + ROV (Inspection Class)
- + Multibeam
- + Side Scan Sonar
- + Magnetometer
- + Subbottom Profiler
- + USBL
- + Winch

Installation:

- + A-frame
- + Moonpool
- + Over the side
- + Hull mounted



No Limit Ships

