



Geo Explorer

Survey Vessel

Classification / Flag / Registration

Vessel Name	: Geo Explorer
Owner	: Geo Plus B.V
Operator	: Geo Plus Survey B.V.
Flag	: Dutch
Call sign	: PBJJ
IMO	: 9405069
Port of registry	: Eemshaven, The Netherlands
Built	: 2007
Builder	: No Limit Ships BV, The Netherlands
Range	: 30 nautical miles
Classification	: Lloyds Register, 100 A1, LMC up to 30 Nm, SSC PATROL MONO HSC, G2

General dimensions

Length overall	: 16.40 m
Length between perpendiculars	: 14.66 m
Breadth moulded	: 4.32 m
Breadth overall	: 5.20 m
Draft	: 1.20 m
Air draft	: 3.50 m
Gross Tonnage	: 34 tons
Light ship weight	: 29 tons

Geo Plus B.V.

Verlengde Bremenweg 4
9723 JV Groningen
The Netherlands

VAT: NL815180573B01
IBAN: NL78RABO0319034852
CoC: 2091383

+31 (0) 50 207 4820

info@geoplus.nl
www.geoplus.nl

Accommodation

Marine crew	: 2 persons
Passengers	: 12 persons
Bedspace / 2 cabins	: 2 x 1 person

Toilet, shower and complete galley on board.
Airco and heating in all compartments.

Speed

Speed	: max. 14 knots (C-rating) at 100% load
Survey speed	: 4 – 10 knots

Capacities

Fuel	: 4.000 liters
Fresh water	: 1000 liters
Grey / black water	: 400 liters

Machinery / Propulsion

Propulsion	: Diesel
Diesel engines	: MAN 2 x 412 kW (2x 560hp)
Generator + inverter	: 16 kW + 7 kW

Survey equipment

Multibeam	: Kongsberg EM2040C (hull mounted), dual transducer, 200/300/400 kHz
Singlebeam	: Kongsberg EA400 (hull mounted), 38/200 kHz
Gyro/Motion reference	: IXSEA Hydrins II
Hydr. Positioning	: Trimble SPS855, GPS/GLONASS RTK/DGPS
Sound Velocity Probe	: Reson SVP 14/15
Sound Velocity Sensor	: Valeport Mini SVS
Others	: UPS, Hydrographic computer, 19" rack
Additional	: A-frame, over the side pole



Geo Explorer

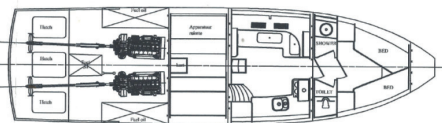
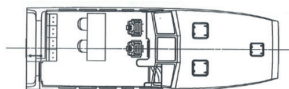
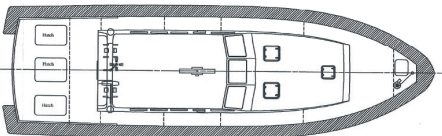
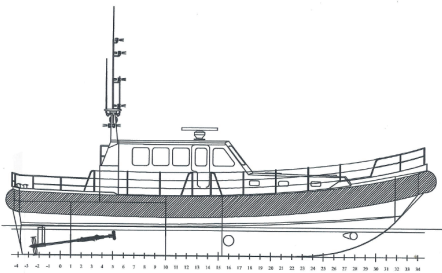
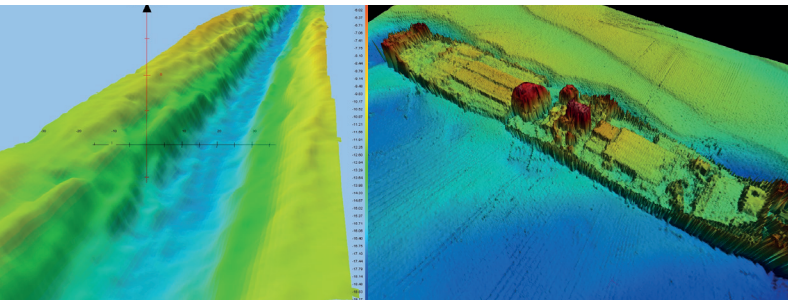
Survey Vessel

Navigation equipment

- Radar Kodan MDC 1710P
- GPS Navigator Kodan KGP-920
- GPS Compass KGC-1
- Forward Looking Sonar Echopilot platinum
- Furuno Naxtex
- Automatic Identification System (AIS)

Communication / Connectivity

- 2 x VHF Sailor RT 5022
- Tronsart
- EPIRB MT 400
- Boardnet 24V / 230V



Geo Plus B.V.

Verlengde Bremenweg 4
9723 JV Groningen
The Netherlands

VAT: NL815180573B01
IBAN: NL78RABO0319034852
CoC: 2091383

+31 (0) 50 207 4820

info@geoplus.nl
www.geoplus.nl

Additional operations

Besides having the possibility to go off-shore for fast survey work, the vessel can also be used for client rep / project staff purposes, as guard vessel or for deliveries of parcels, spares and crew.

Transport

The vessel is equipped with hoisting eyes for fast mobilisation/ transport purposes. Also transport cradles with container locks are available.

Safety

Personal Safety Gear	: 16 persons
Life Rafts	: 4 x 8 persons
Trading area	: 30 Nm

Multifunctional Survey Vessel

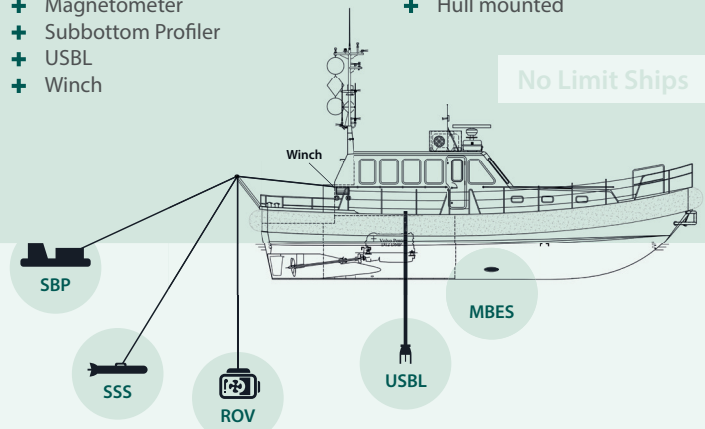
Easy to install project specific sensors

For instance:

- + ROV (Inspection Class)
- + Multibeam
- + Side Scan Sonar
- + Magnetometer
- + Subbottom Profiler
- + USBL
- + Winch

Installation:

- + A-frame
- + Moonpool
- + Over the side
- + Hull mounted



No Limit Ships