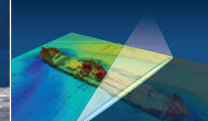


- + Survey vessel
- + Fast crew tender
- + Multibeam
- + Comfortable work environment
- + Hoisting eyes



**GEO PLUS**  
NETHERLANDS



# Geo Explorer

## Survey Vessel

### Classification / Flag / Registration

Vessel Name	: Geo Explorer
Owner	: Geo Plus B.V.
Flag	: Dutch
Call sign	: PBJJ
IMO	: 9405069
Port of registry	: Eemshaven
Built	: 2007
Builder	: No Limit Ships B.V.
Range	: 30 nautical miles
Classification	: Lloyds Register 100A1 SSC PATROL MONO HSC G2 LMC up to 30 Nm

### General dimensions

Length overall	: 16.40 m
Length between perpendiculars	: 14.66 m
Airdraft	: 3.50 m
Breadth moulded	: 4.32 m
Breadth overall	: 5.20 m
Draft	: 1.20 m
Gross Tonnage	: 34 tons
Light ship weight	: 29 tons

**Geo Plus BV**  
Eenrumermaar 2  
9735 AD Groningen (NL)  
P.O. Box 107  
9700 AC Groningen  
☎ +31 (0) 50 588 7272  
info@geoplus.nl  
www.geoplus.nl

### Accommodation

Passengers	: 12 persons
Bedspace / 2 Cabins	: 2x1 persons

- Toilet, shower and complete galley on board
- Wheelhouse Crew seats, Norsap NS800 Sea
- Airco and heating in all compartments

### Speed

Speed	: max. 14 knots (C-Rating)
Survey speed	: 8-10 knots

### Capacities

Fuel	: 4000 liters
Fresh water	: 1000 liters
Grey/black water	: 400 liters

### Survey Equipment

Multibeam	: Kongsberg EM2040C (hull mounted), Dual Head
Singlebeam	: Kongsberg EA 400 (hull mounted), 38/200 kHz + 710 kHz
Gyro/Motion reference	: IXSEA Hydrins II
Hydr. Positioning	: Trimble SPS855, GPS/GLONASS RTK/DGPS
Sound Velocity Probe	: Reson SVP14/15
Sound Velocity Sensor	: Valeport Mini SVS
Hydrographic Software	: QINSy
Hydrographic computer	
UPS	
Moonpool	: 78 x 63 cm

Mobile survey equipment is available for quick installation:

- CNav-GPS
- Over the side mounted pole
- 19" rack
- Full foamed new fenders (2017)

### Navigation

- Radar Koden MDC 1710P
- GPS Navigator Koden KGP-920
- GPS Compass KGC-1
- Forward Looking Sonar Echopilot platinum
- Furuno Navtex
- Automatic Identification System (AIS)

### Communication / Connectivity

- 2x VHF Sailor RT-5022
- EPIRB MT 400
- Tronsart
- Boardnet 24V / 230V

### Machinery / Propulsion

Main diesel engines	: MAN 2x 412 kW(2x 560 hp)
Generators + inverter	: 7 kW generator and 6 kW inverter and second generator 16 kW

### Multifunctional work deck

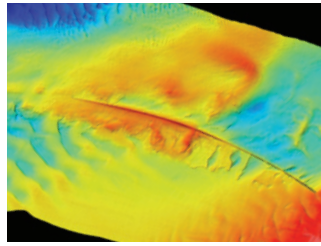
The vessel is equipped with hoisting eyes for fast mobilisation/transport purposes. Also transport cradle with container locks is available.

Details on this specification are subject to change without notice.

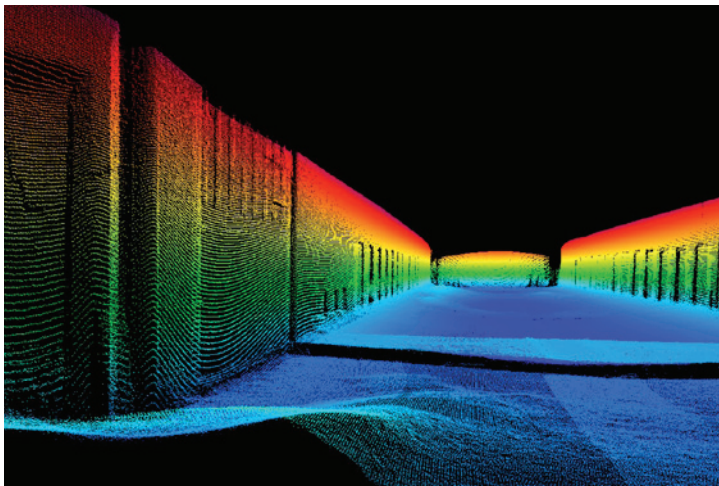
www.geoplus.nl

Customized  
Hydrographic services  
worldwide





**Geo Explorer:**  
**For six consecutive years in Siberia**



## Multifunctional survey vessel

Easy to install project specific sensors

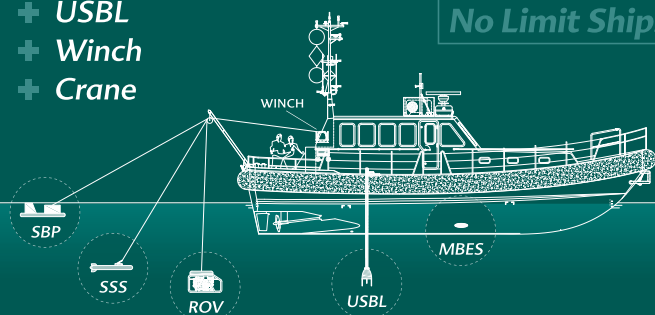
For instance:

- + ROV (inspection class)
- + Multibeam
- + Side Scan Sonar
- + Magnetometer
- + Subbottom profiler
- + USBL
- + Winch
- + Crane

Installation:

- + A-frame
- + Moonpool
- + Over the side
- + Hull mounted

No Limit Ships

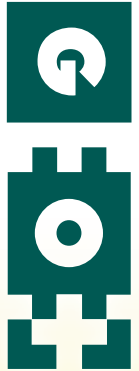


### Additional Facilities

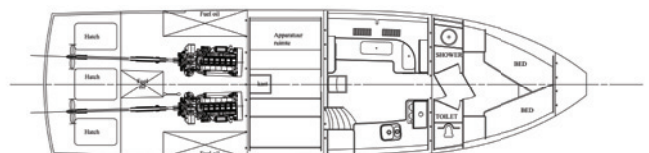
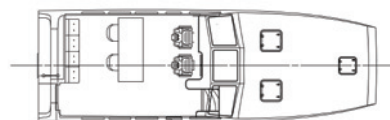
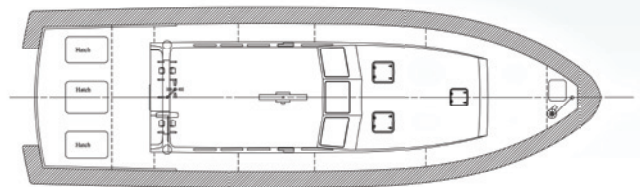
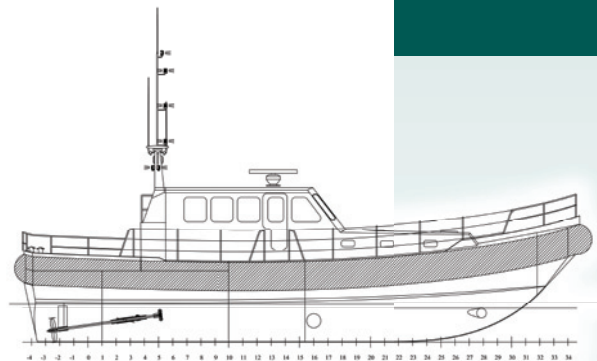
Besides having the possibility to go off-shore for fast survey work, the vessel can also be used for client rep/project staff purposes, as guard vessel or for fast deliveries of parcels, spares and crew.

### Safety

- Personal Safety Gear : 16 persons
- Life Rafts : 4x 8 persons
- Trading Area : 30 Nm
- Marine Crew : 2 persons



**Geo Plus BV**  
Eenrumermaar 2  
9735 AD Groningen (NL)  
P.O. Box 107  
9700 AC Groningen  
☎ +31 (0) 50 588 7272  
info@geoplus.nl  
www.geoplus.nl



Details on this specification are subject to change without notice.

