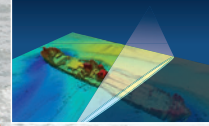
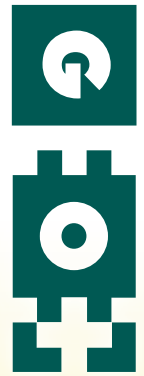


- + DP 1
- + Hybrid (75% fuel reduction)
- + HiPap 501
- + Green passport Lloyd's Register
- + Hoisting eyes



**GEO PLUS**  
NETHERLANDS



# Geo Focus

## 35 m Hybrid Survey / ROV support vessel

### Classification / Flag / Registration

Vessel Name : Geo Focus  
 Owner : Geo Tender IV B.V.  
 Flag : Dutch  
 Call sign : PCOS  
 IMO : 9628855  
 Port of registry : Eemshaven  
 Built : 2012  
 Builder : De Haas Maassluis, The Netherlands  
 Range : 1200 NM @ hybrid mode, 650 NM @ operational speed (13 knots), 10-14 days full operation  
 Classification : Lloyds Register + 100 A1, SSC, G3 Workboat, MONO, UMS, [+]LMC, DP(AM), EP, Green Passport, 200nm Limit

### General dimensions

Length overall : 34.50 m  
 Length between perpendiculars : 32.59 m  
 Length waterline : 32.84 m  
 Air draft (*mast down*) : 13.00 m  
 Breadth moulded : 7.81 m  
 Breadth overall : 8.33 m  
 Depth : 4.23 m  
 Draft : 2.20 m  
 Gross Tonnage : 235 tons  
 Light ship weight : 165 tons

**Geo Plus BV**  
 Eenrumermaar 2  
 9735 AD Groningen (NL)  
 P.O. Box 107  
 9700 AC Groningen  
 ☎ +31 (0) 50 588 7272  
 info@geoplus.nl  
 www.geoplus.nl

### Accommodation

Single cabins : 2  
 Double cabins : 8  
 Total accommodation : 18 persons

Comfort cabins : High Norwegian standards, WIFI, each cabin provided with toilet and shower.

HVAC system : The air conditioning system is designed for both tropical and arctic conditions. The system has two separated units for the wheelhouse, survey room, and the accommodation below deck to avoid interference in comfort of the crew during 24 hours duty. On the wheelhouse/survey room deck a drop air conditioning system ensures a comfortable work condition without chill flow.

Crew facilities : Lounge, mess room, galley (HACCP compliant), changing room, internet, TV, library, game console

### Speed / Consumptions

Speed : max. 14 knots (C-rating)  
 Speed Hybrid : max. 9 knots  
 Transit speed : 13 knots / 230 l/h  
 Survey speed (Hybrid) : 8 knots / 50 l/h

### Capacities

Fuel : 17.50 m<sup>3</sup>  
 Fresh water : 2.60 m<sup>3</sup>  
 Grey water : 2 x 2.60 m<sup>3</sup>  
 Black water : 1 x 2.60 m<sup>3</sup>  
 Fresh water generator : Aquamar AQE-4D, capacity 3200 l / 24 h

### Multifunctional work deck

Deck space : 40 m<sup>2</sup>  
 A-frame : SWL 3500 kg, hoisting capacity hydraulic winch 3200 kg, outreach approximately 3 m back- and forward of rotation point.  
 Deckcrane : Knuckle boom marine crane (Heila HLMR 16-3S), 10.97 m reach from crane axis, max. load @ max. reach is 1200 kg @ 10.97 m, load sensing for efficient power request, remote control for easy operation.  
 Moonpool : 600 mm  
 Hatch engine : Clear opening 4.50 x 1.50 m, provides access to the workshop down below in the engine room  
 Provided power : 2 x 400 V (3PH) - 63 A, 2 x 400 V (3PH) - 32 A and 2 x 230 V, 16 A  
 Other facilities : Electric deck heating, grid of container fittings, removable railing, fresh water tap, 25 mm rubber deck coverage, easy cable entry from workdeck to the survey room and technical room, frame for installation of winches.  
 Dynamic position : Alphanon / NAVIS 400 – DP Class 1 (AM) DP. Operations can be executed from both the survey room and the wheelhouse.  
 MOB Boat : SOLAS approved MOB boat (5 persons and 1 person on stretcher), positioned on large hatch or on top of container.

### Machinery / Propulsion

Main diesel engines : 2x Caterpillar C18 ACERT 651 KW @ 2200 rpm (6 Cil. In-line)  
 Gearboxes / Diesel-Electric propulsion : Reintjes 344 RHS (Hybrid Drive)  
 Bow Thruster : 2x Voith Inline Thruster VIT 380-50  
 Generators : 2x John Deere Genset 209 KW @ 1500 rpm

Details on this specification are subject to change without notice.

www.geoplus.nl

Customized  
Hydrographic services  
worldwide



## Survey Equipment

Multibeam	: Kongsberg EM 2040 (hull mounted), 200/300/400 kHz, 0.5x1° Dual Head
Singlebeam	: Kongsberg EA 400 (hull mounted), 38/200 kHz
USBL positioning	: Kongsberg HIPAP 501, NODE transponders
Gyro/Motion reference	: IXSEA Hydrins III
Hydr. Positioning	: C-NAV 3050, PPP/RTG/RTK/DGPS Trimble SPS852, RTK/DGPS
Sound Velocity Probe	: Valeport mini SVP
Sound Velocity Sensor	: Valeport mini SVS
Current Profiler	: Nortek Signature VM500 ADCP
Moonpool	
Other	: Fast mobilisation of additional equipment provided by 19 inch rack space, N ports, cable glands, antenna mounts etc.

## Navigation

- Sea Radar X-band (JRC)
- River Radar (JRC)
- ECDIS (Alphachart T ECDIS)
- Speedlog
- Echosounder
- DGPS
- AIS
- NAVTEX
- CCTV system on aft deck, top deck and engine room
- Integrated control and alarm system (BIMAC)

## Communication / Connectivity

- VSAT – Intellian V110
- Inmarsat Fleet Broadband
- UMTS
- WIFI
- 12 / 24 / 220 / 400 V connections

## Entertainment / Leisure

Broadband connections are provided for personal use throughout the vessel. LAN and WLAN connection is available in each cabin. The mess room and lounge are equipped with a 37" HD LED television connected to a SAT TV system, additionally, the lounge provides an audioset and game console.

## Additional Facilities

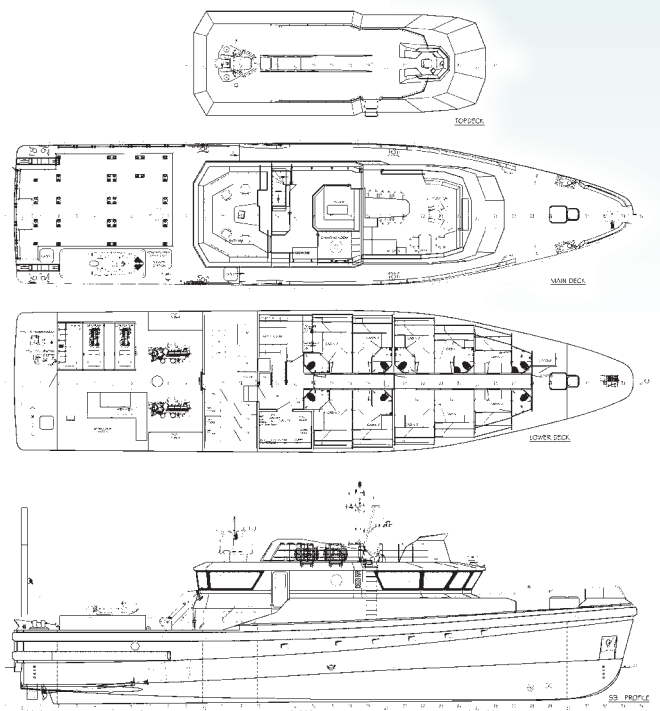
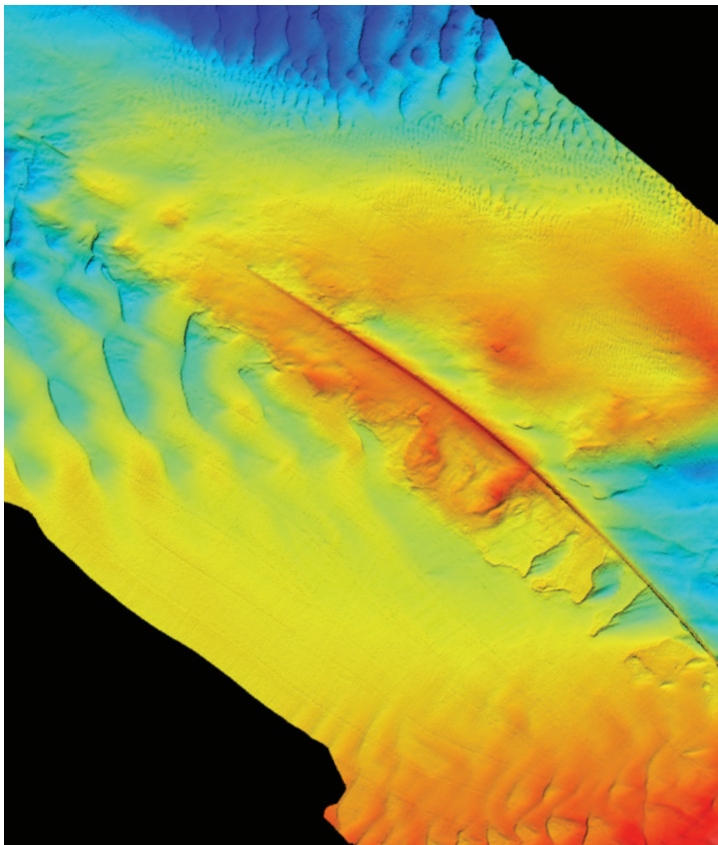
Interactive LED HD screens are provided in the wheelhouse and survey room for presentation purposes.

## Sustainable Features

- Hoisting eyes on the vessel make it possible to place the vessel on board of a larger vessel to ship it all over the world.
- Hybrid drive so less fuel consumption and less NOx emission.
- Green Passport and Environment Protection (EP) class notification.
- Seakeeper Anti-Roll Gyro System
- Very low noise level



**Geo Plus BV**  
Eenrumermaar 2  
9735 AD Groningen (NL)  
P.O. Box 107  
9700 AC Groningen  
☎ +31 (0) 50 588 7272  
info@geoplus.nl  
www.geoplus.nl



Details on this specification are subject to change without notice.

