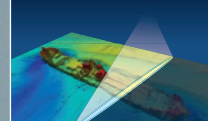


- + Survey vessel
- + Fast crew tender
- + Multibeam
- + Comfortable work environment
- + Hoisting eyes



**GEO PLUS**  
NETHERLANDS



# Geo Connection

## Survey Vessel

### Classification / Flag / Registration

Vessel Name	: Geo Connection
Owner	: Geo Tender II B.V.
Flag	: Dutch
Call sign	: PCFZ
IMO	: 9590371
Port of registry	: Eemshaven
Built	: 2010
Builder	: No Limit Ships B.V.
Range	: 30 nautical miles
Classification	: Lloyd's Register class 100A1 SSC PATROL MONO HSC G2 LMC up to 30 Nm
GMDSS	: A1 + A2

### General dimensions

Length overall	: 16.70 m
Length between perpendiculars	: 14.66 m
Airdraft	: 3.50 m
Breadth moulded	: 4.50 m
Breadth overall	: 5.26 m
Draft	: 1.30 m
Gross Tonnage	: 36 tons
Light ship weight	: 32 tons

### Geo Plus BV

Eenrumermaar 2  
9735 AD Groningen (NL)  
P.O. Box 107  
9700 AC Groningen  
☎ +31 (0) 50 588 7272  
info@geoplus.nl  
www.geoplus.nl

### Accommodation

Passengers	: 12 persons
Bedspace / 2 Cabins	: 2x1 persons

- Toilet, shower and complete galley on board
- Wheelhouse Crew seats, Norsap NS800 Sea
- Airco and heating in all compartments

### Speed

Speed	: max. 18 knots (C-rating) at 100% load
Survey speed	: 8-10 knots

### Capacities

Fuel	: 4000 liters
Fresh water	: 900 liters
Grey/black water	: 400 liters

### Survey Equipment

Multibeam	: Kongsberg EM3002D (hull mounted), 300 kHz
Singlebeam	: Kongsberg EA 400 (hull mounted), 38/200 kHz
Gyro/Motion reference	: IXSEA Octans 4
Hydr. Positioning	: Trimble SPS55, GPS/Glonass RTK/DGPS
Sound Velocity Probe	: Reson SVP14/15
Sound Velocity Sensor	: Valeport Mini SVS
Hydrographic Software	: QINSy
Hydrographic computer	
UPS	

Mobile survey equipment is available for quick installation:

- CNav-GPS
- Over the side mounted pole
- 19" rack

### Navigation

- Radar Kodon MDC 1710P
- GPS Navigator Kodon KGP-920
- GPS Compass Comnav
- Forward Looking Sonar Echopilot platinum
- Furuno Navtex
- Automatic Identification System (AIS)

### Communication / Connectivity

- VHF Sailor RT-5022
- VHF radiotelephone Entel HT 649
- EPIRB MT 403FF
- Boardnet 24V / 230V
- MF/HF Radio

### Machinery / Propulsion

Main diesel engines	: Volvo 2x 478 kW (2x 650 hp)
Generator + inverter	: 17 kW + 9 kW

### Multifunctional work deck

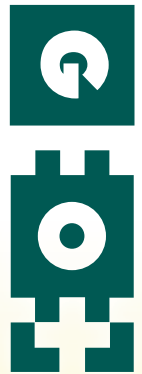
The vessel is equipped with hoisting eyes for fast mobilisation/transport purposes. Also transport cradle with container locks is available. A-frame suitable for lifting 100 kg is on the aft deck.

Details on this specification are subject to change without notice.

www.geoplus.nl

Customized  
Hydrographic services  
worldwide





## Additional Facilities

Besides having the possibility to go off-shore for fast survey work, the vessel can also be used for client rep/project staff purposes, as guard vessel or for fast deliveries of parcels, spares and crew.

## Sustainable Features

Low sulphur fuel + LED illumination.

## Safety

Survival craft SART McMurdo S4  
 Personal Safety Gear : 16 persons  
 Life Rafts : 2x 16 persons  
 Trading area : 30 Nm  
 Marine Crew : 2 persons

**Geo Plus BV**  
 Eenrumermaar 2  
 9735 AD Groningen (NL)  
 P.O. Box 107  
 9700 AC Groningen  
 ☎ +31 (0) 50 588 7272  
 info@geoplus.nl  
 www.geoplus.nl

# Multifunctional survey vessel

## Easy to install project specific sensors

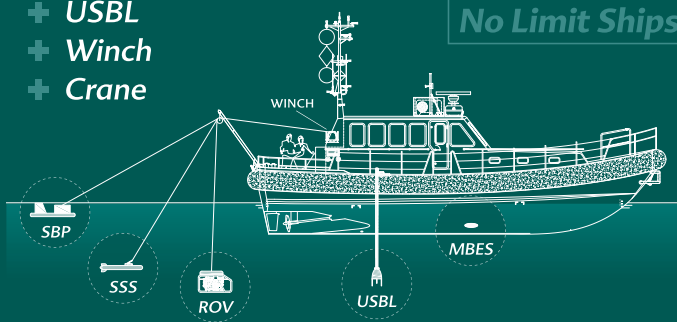
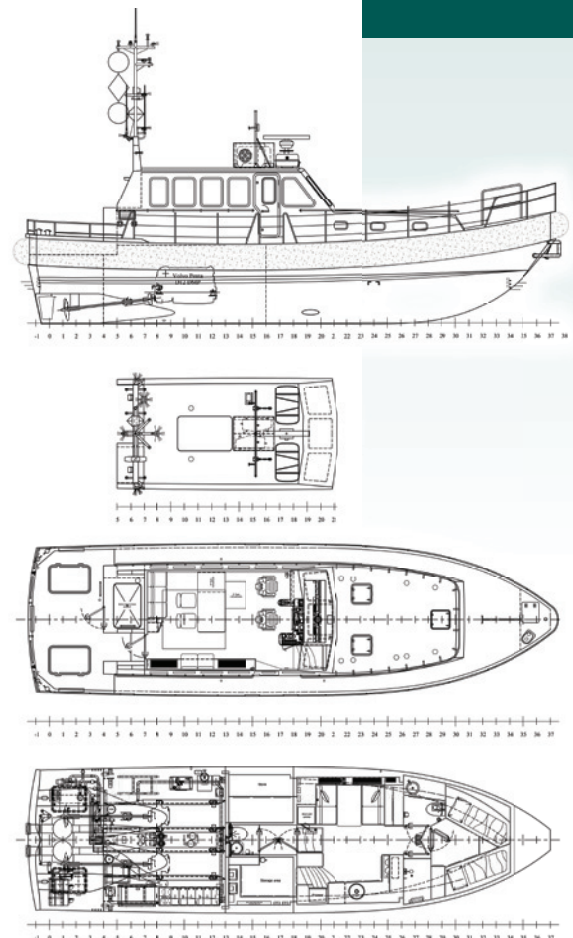
### For instance:

- + ROV (inspection class)
- + Multibeam
- + Side Scan Sonar
- + Magnetometer
- + Subbottom profiler
- + USBL
- + Winch
- + Crane

### Installation:

- + A-frame
- + Moonpool
- + Over the side
- + Hull mounted

No Limit Ships



Details on this specification are subject to change without notice.

